

RE:GEN

A BLUEPRINT FOR A
SUSTAINABLE TOMORROW



Sustainable Conversations

***Supported by
unsustainable
infrastructure***

THE RE:HUB

GROUNDS FOR GROWTH

REGENERATIVE

The space doesn't
degrade, it *heals*.

CYCLIC

Every user encourages
others to do more

BINDING

The space creates a sense
of collective ownership

HOW DO WE DO IT?

Packing our *proven design*
with our **EXPERTIES & RESOURCES**
we can turn liabilities into assets.

£50,000

Imperial investment into
RE:GEN

3.5 ACRES

Committed central London
estate to the project

50+

Partners across academia,
operations and external

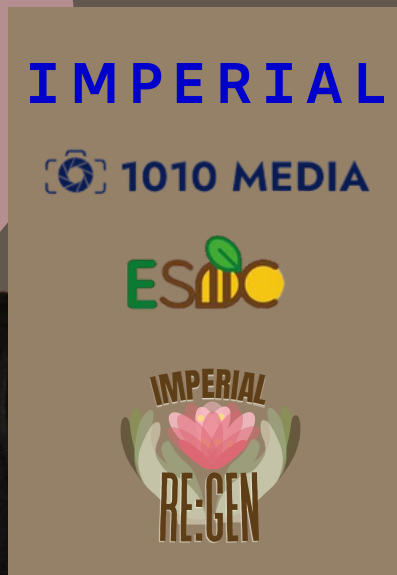
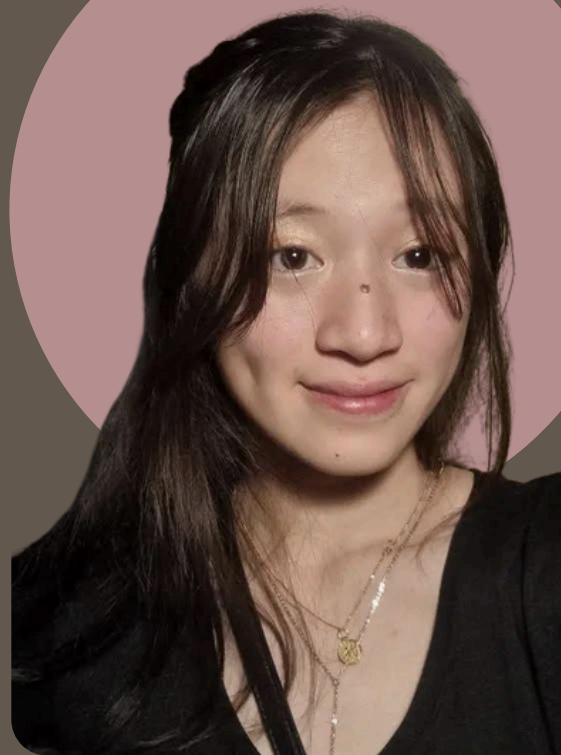


*This is our space.
We're starting here.*



WHO'S BEHIND THIS?

Charlene
Tai



Emilio Garcia
Padron



Isabelle
Nuttall



WHAT'S NEXT?



To **SCALE UP** from Imperial by *franchising* to other universities and education bodies in the UK